

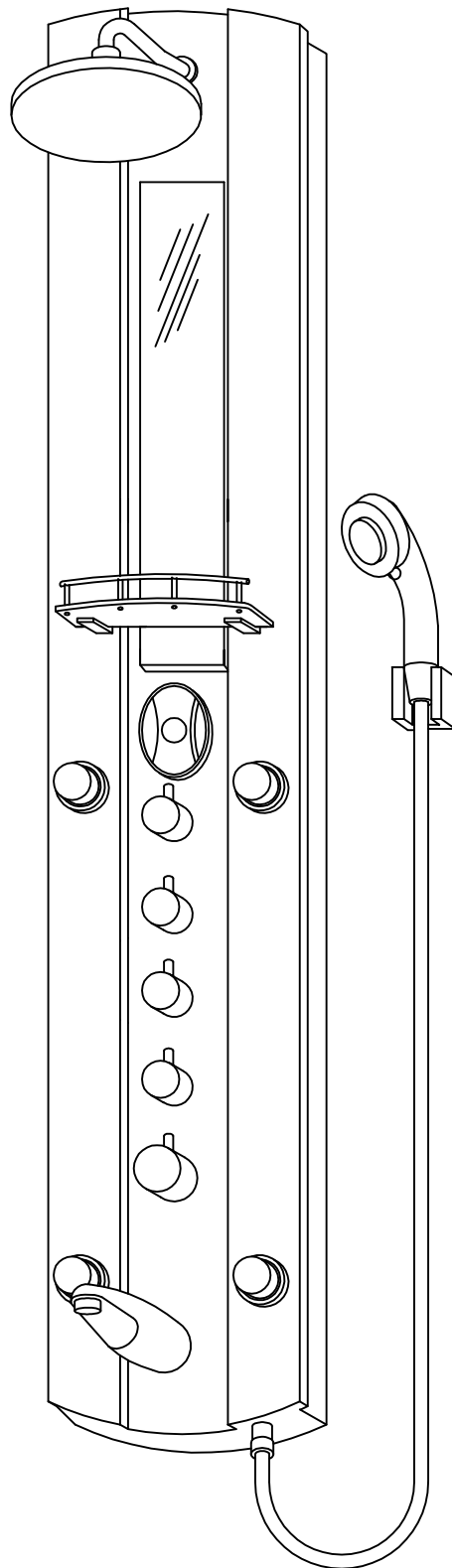
Hudson Reed



Model No. S2805T
Shower Panel

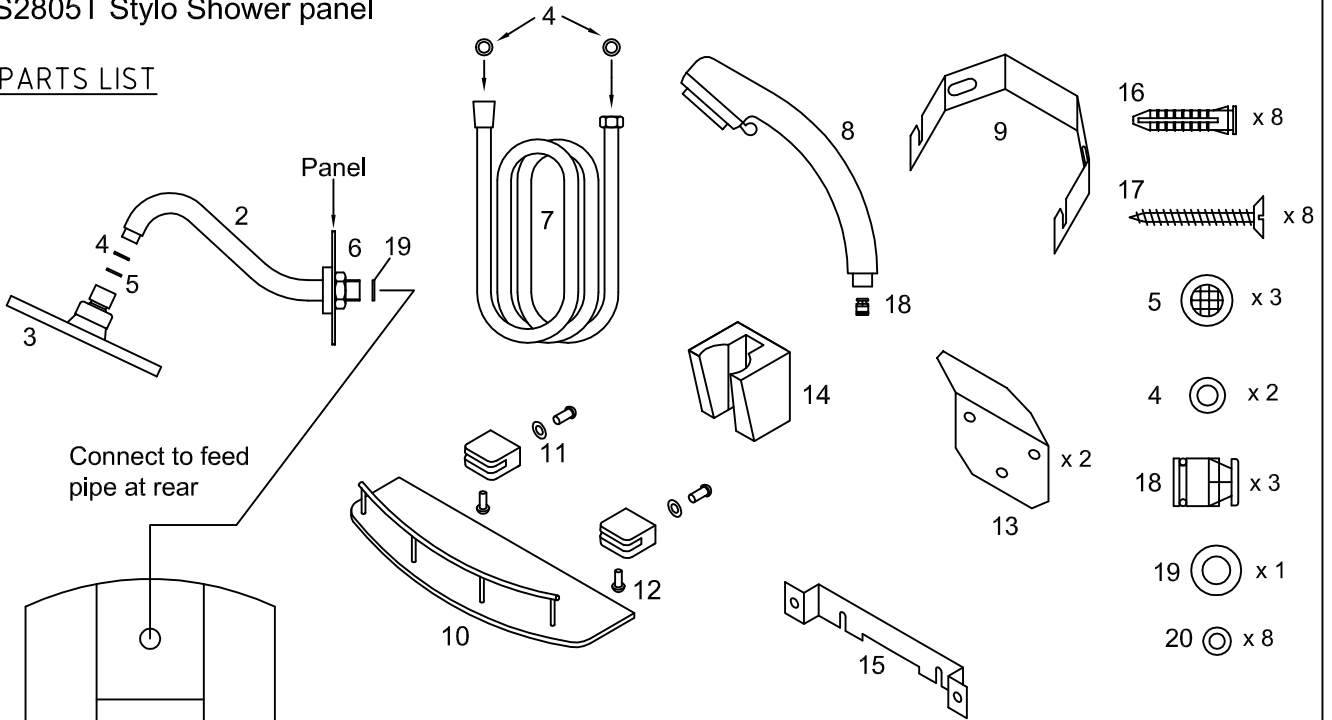
Contents

Parts List
Assembly/Technical Data
Installation



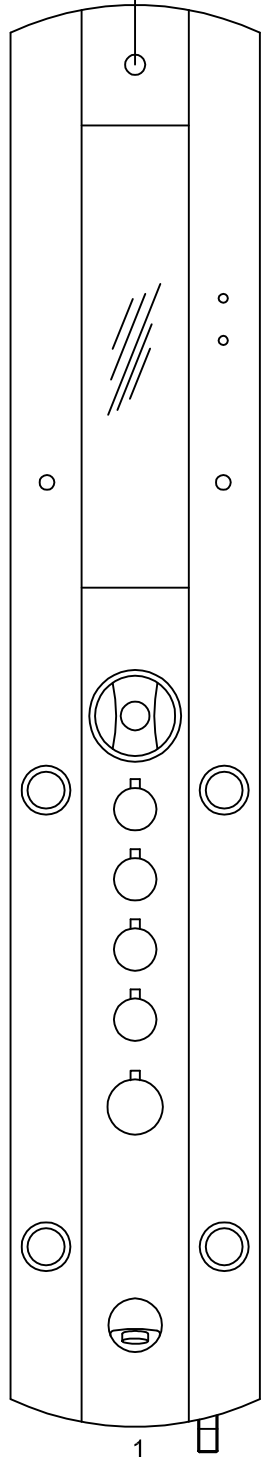
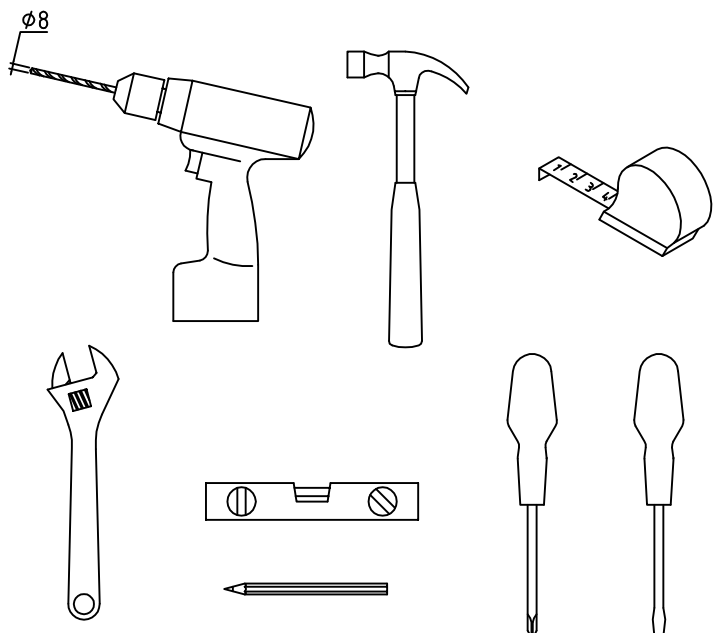
S2805T Stylo Shower panel

PARTS LIST



- | | |
|--|-------------------------------|
| 1. Shower panel | 16. Wall plugs (8) |
| 2. Shower arm | 17. Screw (8) |
| 3. Shower head | 18. Check valve (3) |
| 4. Small rubber seal (3) | 19. Large rubber seal |
| 5. Gauze filter seal (3) | 20. Stainless steel washer(8) |
| 6. Shower arm retaining nut | |
| 7. Flexible hose | |
| 8. Hand shower | |
| 9. Corner mounting bracket | |
| 10. Shelf | |
| 11. Shelf mounting bracket (2) | |
| 12. Shelf retaining screw - Nylon (2) | |
| 13. Wall bracket (2) | |
| 14. Handset bracket (2) | |
| 15. Mounting bracket - pre-fitted to panel (2) | |

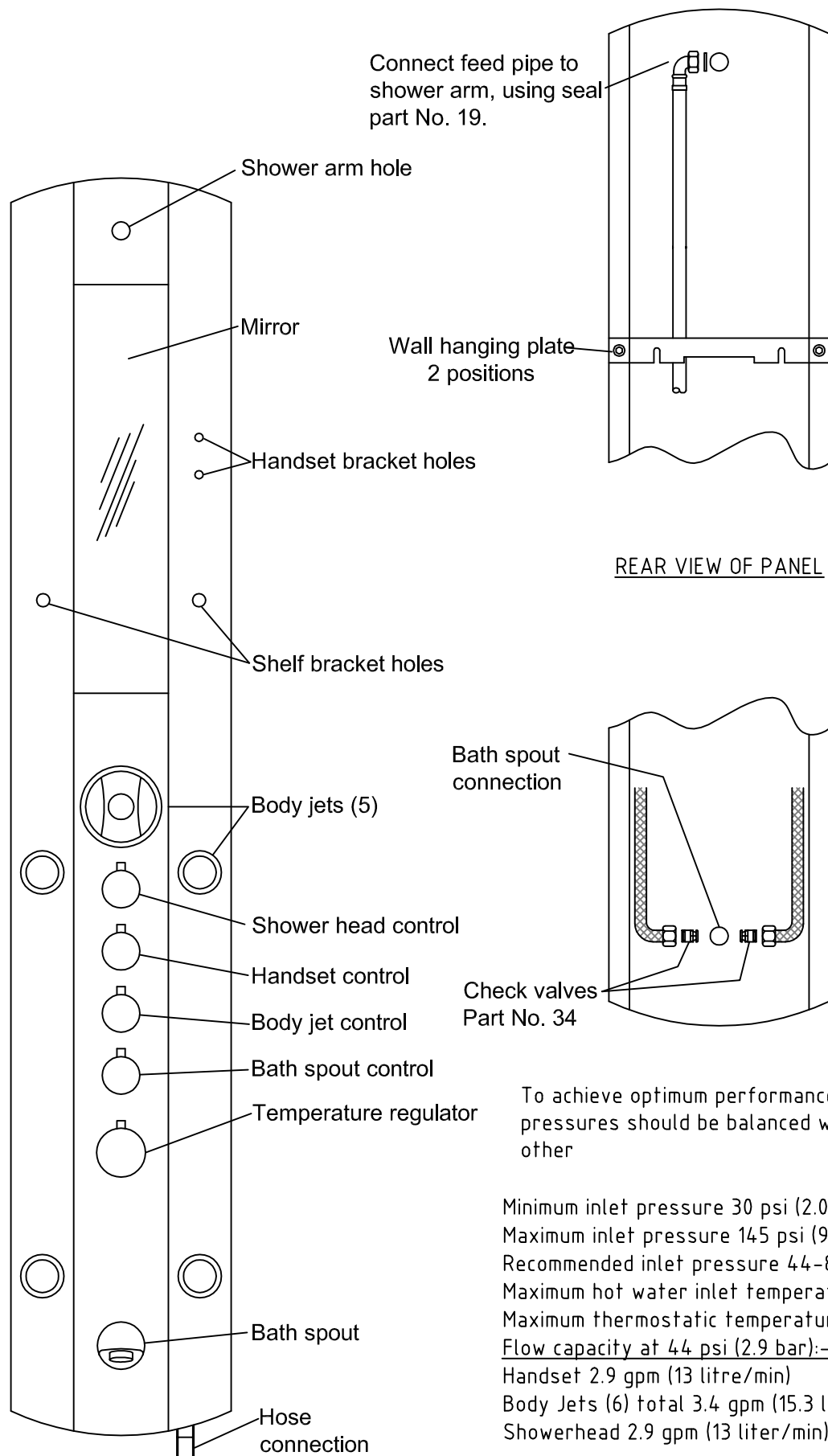
TOOLS REQUIRED



Hose connection

S2805T Shower Panel

ASSEMBLY & TECHNICAL DATA

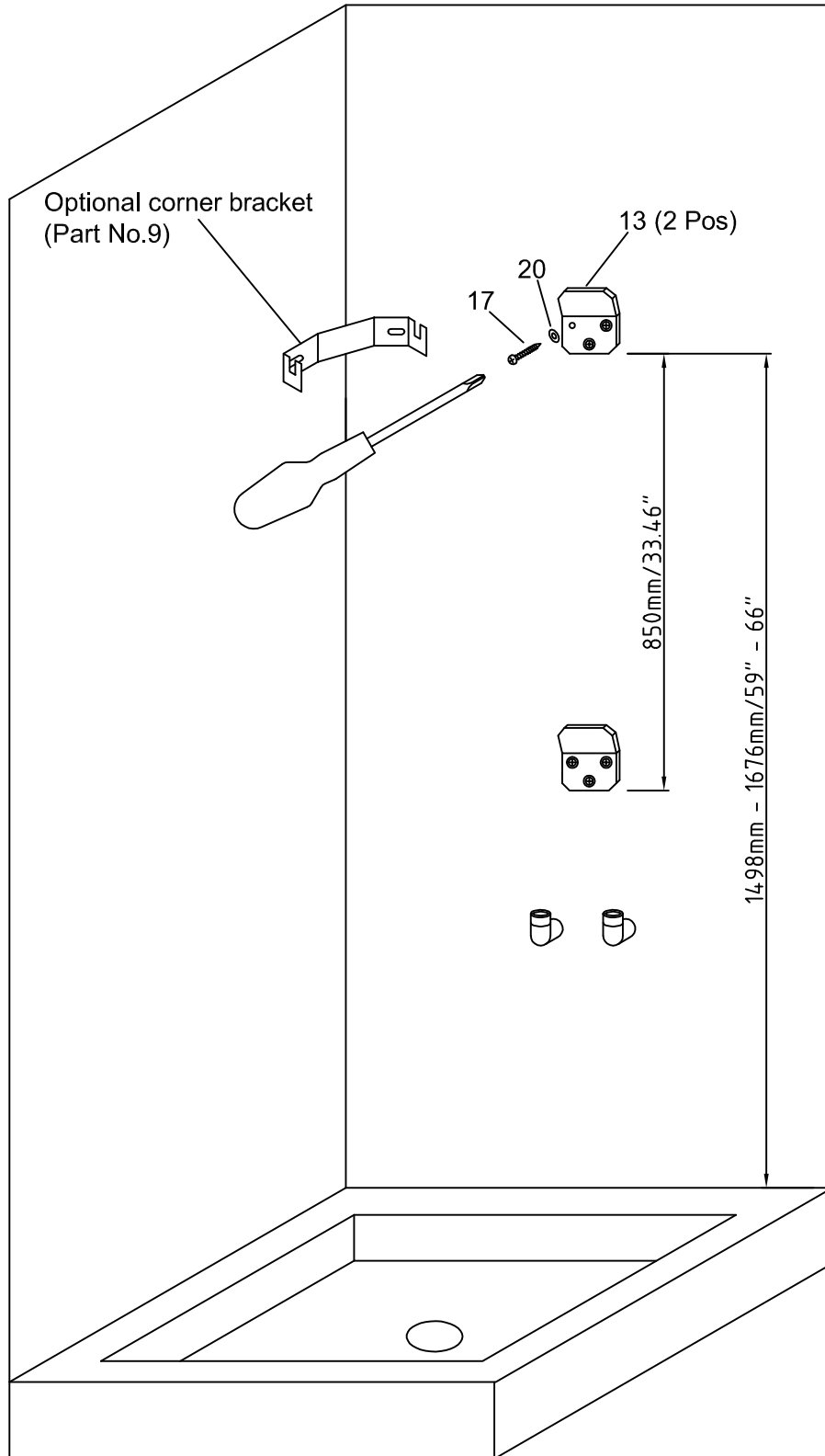


To achieve optimum performance, hot & cold inlet pressures should be balanced within 10% of each other

- Minimum inlet pressure 30 psi (2.0 bar)
- Maximum inlet pressure 145 psi (9.7 bar)
- Recommended inlet pressure 44-87 psi (2.9 - 5.8 bar)
- Maximum hot water inlet temperature 158°F (70°C)
- Maximum thermostatic temperature 122°F (55°C)
- Flow capacity at 44 psi (2.9 bar):-
- Handset 2.9 gpm (13 litre/min)
- Body Jets (6) total 3.4 gpm (15.3 litre/min)
- Showerhead 2.9 gpm (13 liter/min)

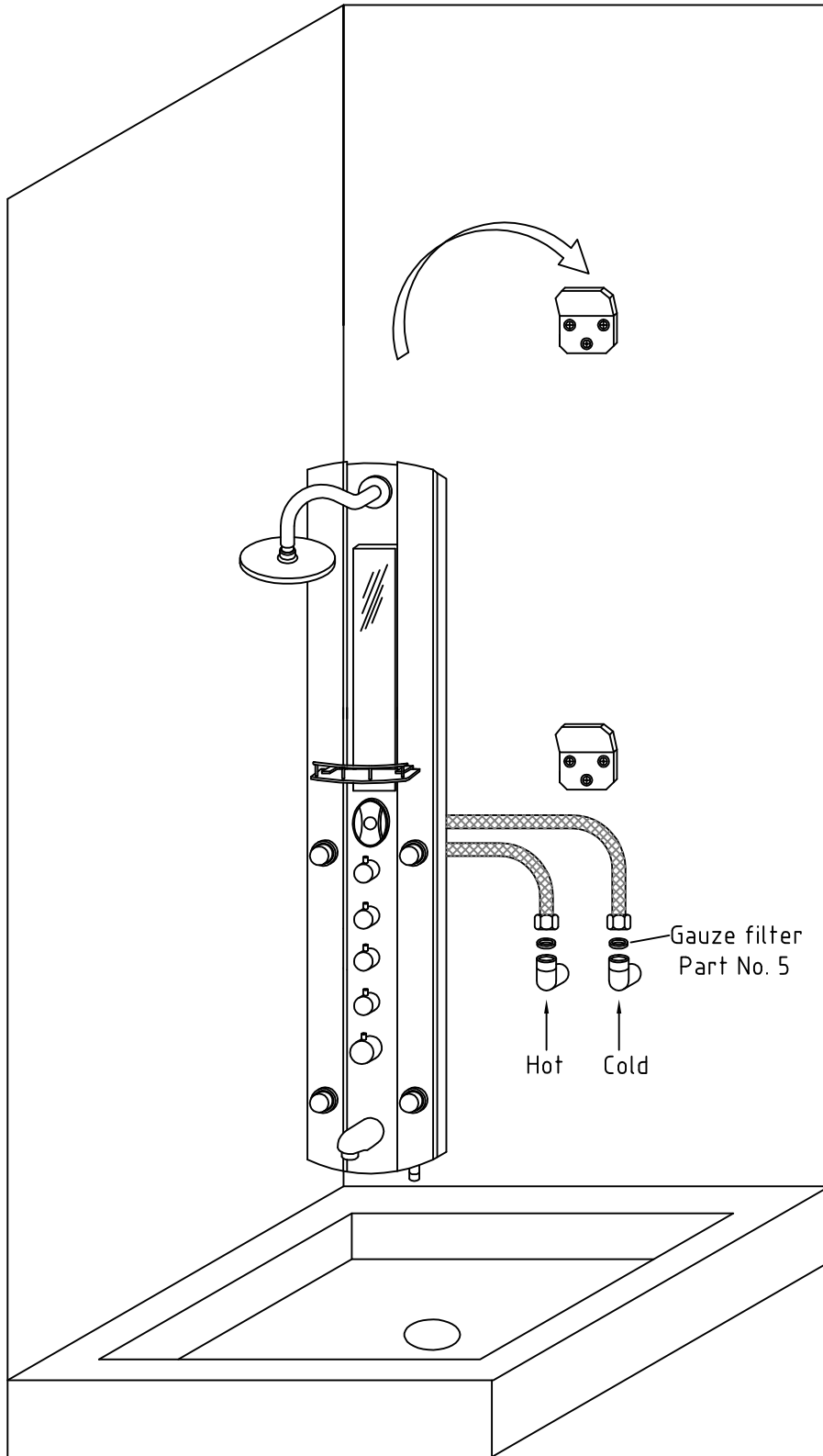
S2805T Shower Panel

INSTALLATION (1)



S2805T Shower Panel

INSTALLATION (2)



Temperature Setting & Calibration:

Pre-set temperature

- The panel temperature is pre-set at 38°C (100°F), but on certain installations the setting may need to be calibrated.

Calibration

- Fully turn on the panel water flow.
Note: Ensure the hot water is above 60°C (140°F) and you have more than 2 bar (30 psi) pressure.
- Set the temperature control handle at the 38°C position.
- Remove the temperature control handle by loosening the fixing screw.
- Relocate the temperature control handle approximately 3mm back onto the splined shaft.
Hold in position
- If the pre-set temperature is too hot turn the temperature control handle anti-clockwise to obtain the 38°C (100°F). Allow the temperature to stabilise for 10 seconds after each movement.
- If the pre-set temperature is too cold turn the temperature control handle clockwise to obtain the 38°C (100°F). Allow the temperature to stabilise for 10 seconds after each movement.
- When set at 38°C (100°F) carefully remove the temperature control handle on the splined shaft aligning the 38°C (on the handle) with the line located on the panel.
- Secure the temperature control handle with the fixing screw.